

New

2PD05 Pump Drive

Standard • Modified • Custom

Features

Modular Design – Bearings and gears are self-contained within the housings. Adapter groups are not required for assembly of gearbox.

SOS Spur Gears – (Solid on shaft) one-piece gear/shaft design provides consistent and uniform alignment. Reduces the total number of parts. One-piece design simplifies assembly.

Patented Spline Lubrication (No. 7,152,711) – Oil passages built into the housings, along with bearing design, create constant oil flow across splines and through bearings, resulting in longer trouble-free operation.

Fewer Parts – New single seal and bearing design. Engine adapters and pump pads are already available from the Durst Pump Drive product line, results in fewer parts to inventory.

Benefits

Smaller Package – Requires less space for smaller applications.

Higher Rating – AGMA class 10 gear geometry and large ball bearing design, result in high torque rating.

Simpler to Service – Ball bearings do not require special shimming in order to set end play. Pump pads and input adapters can be easily changed without disturbing bearings.

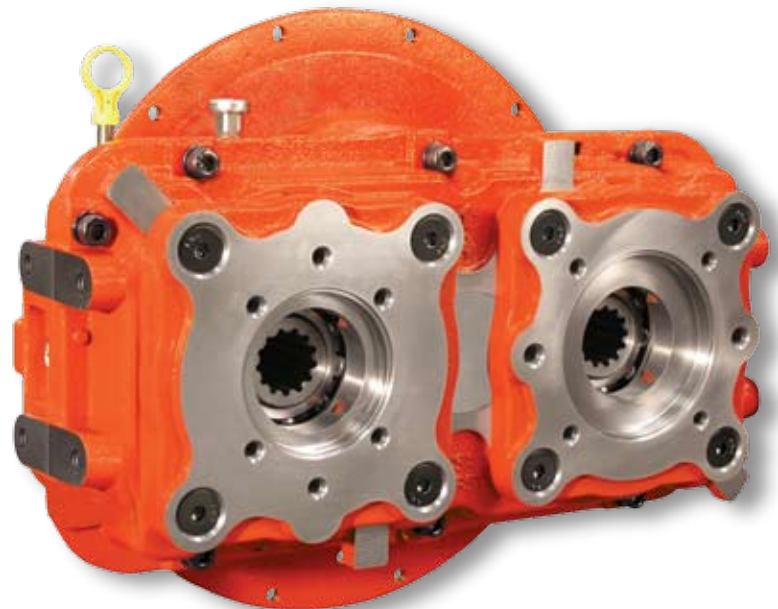
Competitive Pricing – Result of fewer parts and less assembly time due to the modular design.

Reduced Lead Time – Availability of fewer parts to inventory and shorter assembly time, results in quicker turn-a-round. Can also be delivered in kit form for distribution assembly to meet customer requirements.

Adaptability/Suitability – Modular design provides ease of special requirements involving modified standards or custom configurations.

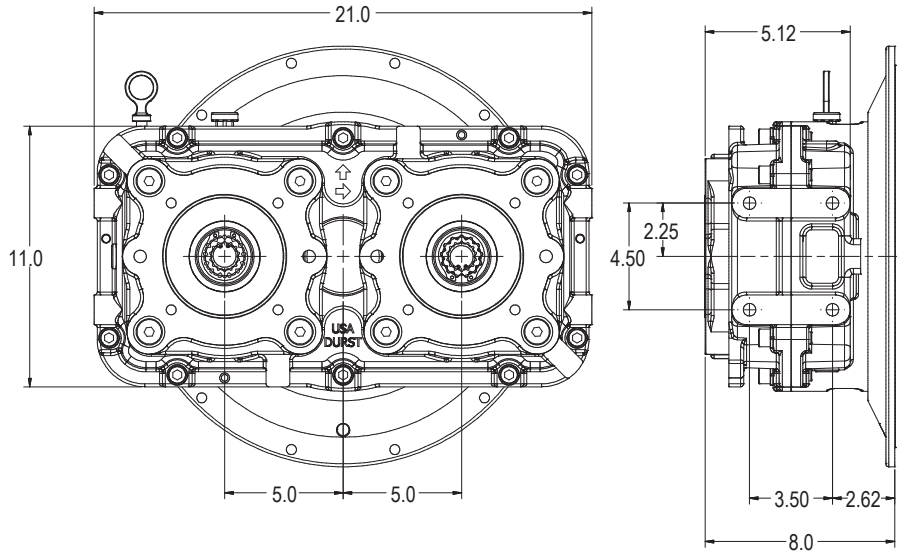
Interchangability – Provides ease of substitution on replacement of other competitive products.

Torsional Stiffness Characteristics – Plays a key role in extending the service life of connected components.



Standard Specifications

- Double Output
- 10" Pump Centers / 5" Gear Centers
- Ratios from 1:1 to 2:1
- 8.0" D x 11.0" H x 21.0" W
- Designed to SAE and AGMA standards
- Approximate dry weight: 200 lbs



MODEL	OUTPUT ROTATION	RATIOS INC. OR DEC.	APPROX. DRY WEIGHT (LBS)	APPROX. DRY WEIGHT (KG)	PUMP PADS	ENGINE ADAPTORS	DRIVE PLATES (SAE)
2PD05	Opposite Input	1:1, 1.14, 1.40, 1.61, 2.00	200	91.00	A,B,C,D	2,3,4	11.5, 10, 8

RATIO	INERTIA				SPEED RATING (RPM)	POWER				TORQUE				OUTPUT SPEED
	INPUT		OUTPUT			INPUT		OUTPUT		INPUT		OUTPUT		
	LB-FT ²	LB-IN ²	LB-FT ²	LB-IN ²		HP	KW	HP	KW	LB-FT	Nm	LB-FT	Nm	
1:1	0.48	69.2	0.48	69.2	2,800	373	278	373	278	700	949	700	949	SAME
1.14:1	0.64	92.7	0.49	71.0	3,000	365	272	365	272	639	866	729	988	DEC
1:1.14	0.52	75.6	0.40	57.8	3,000	381	284	365	272	761	1,032	639	866	INC
1.40:1	1.17	168.8	0.60	86.1	3,000	326	243	326	243	570	773	799	1,083	DEC
1:1.40	0.61	87.4	0.31	44.6	3,000	364	271	326	243	892	1,210	570	773	INC
1.61:1	1.75	252.0	0.68	97.4	3,000	299	223	299	223	523	709	842	1,142	DEC
1:1.61	0.66	94.5	0.25	36.5	3,000	351	262	299	223	988	1,340	523	709	INC
2:1	3.65	525.2	0.91	131.3	3,000	260	194	260	164	455	617	910	1,234	DEC
1:2	0.79	113.5	0.20	28.4	3,000	328	244	260	164	1,148	1,556	455	617	INC

Targeted Applications • Construction • Mining • Forestry • Agriculture • Rail Maintenance • Oil Field



DURST **REGAL**